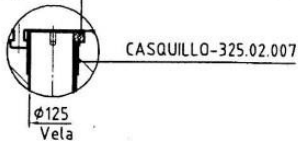
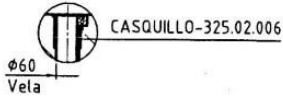


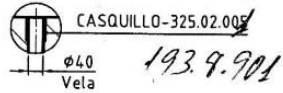
DETALLE W 1:10 600.0.165-Tor. Allen M8x30-DIN 912



DETALLE T 1:10



DETALLE R 1:10



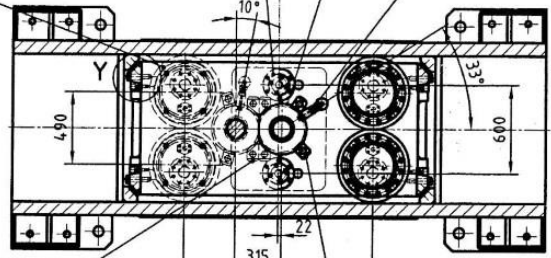
4 CILINDRO COJIN S.E.-901.55.031
 $\phi 320 \times 400$ 250 TN.

2 CILINDRO COJIN D.E.-900.86.051
 $\phi 100 \times \phi 60 \times 400$ 25 TN.

ALARGADERA 1"-399.17.005

SECCION C-C

CILINDRO COJIN INFERIOR

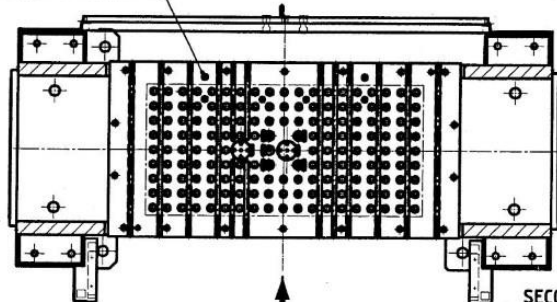


GRAPA FIJACION-155.36.199
 600.4.002 - Tor. exag. DIN-931 M27x120
 608.0.613 - Arandela Grower DIN-127 Ø27

FRENTE

GRAPA FIJACION-155.36.200
 600.4.002 - Tor. exag. DIN-931 M27x120
 608.0.613 - Arandela Grower DIN-127 Ø27

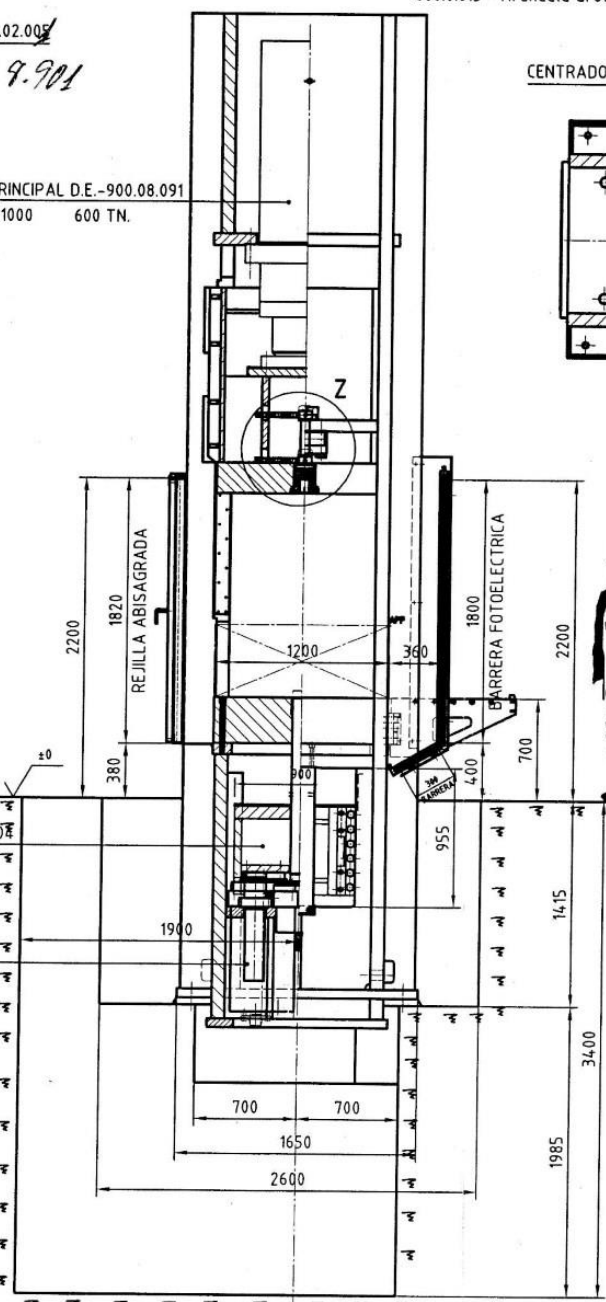
CENTRADOR-155.36.268



FRENTE

SECCION D-D

2 CILINDRO PRINCIPAL D.E.-900.08.091
 $\phi 500 \times \phi 470 \times 1000$ 600 TN.



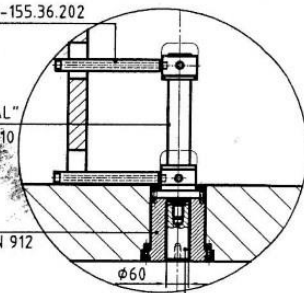
Allen M27x320-DIN 912
 Pasador cilindrico $\phi 32 \times 80$ -DIN 7979

MESA COJIN-155.36.107
 $\phi 20$ -DIN 912

2 CILINDRO COJIN D.E.-900.86.051
 $\phi 100 \times \phi 60 \times 400$ 25 TN.

DETALLE Z 1:10

ALARGADOR-155.36.202



260.4.001-CIL.EXPULSOR "GLUAL"
 KR-50/36x200-A301-G-2-F-1-10

BRIDA CILINDRO-155.36.201
 600.0.180-Tor. Allen M10x35-DIN 912

EXPULSOR-155.36.198

TRAVERSA MOVIL 1:10
 CALA PELABLE - 950.64.009

REGLA DESLIZADERA - 950.18.005
 600.0.301 - Tor. Allen C/R DIN-7984 M8x16
 643.0.324 - Pasador elast. DIN-1481 Ø8x20

REGLA DESLIZADERA FIJA - 155.36.950
 600.4.002 - Tor. ALLEN C/R DIN-7984 M6x12

TRAVERSA - 950.60.008
 - Tor. exag. DIN-931 M4.8x280
 - Arandela plana DIN-125 Ø4.8

S.S.P. -15536-

Edición		MODIFICACIONES		Fecha	Firma
Nº Piezas	Dibujado	Fecha	Firma		
Mecaniz.	Revisado	09.01.04	M. Moreno		
	Aprobado	09.02.04	L.A.		
	Aprobado	09.02.04	L.A.		

LOIRE-SATE

HERNANI (Gulpúzcoa)

CONJUNTO GENERAL

155-36-001-0

Prensa EDIMR 1200/1000

Sustituye al:
 Sustituido por: