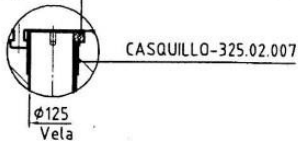
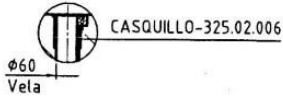


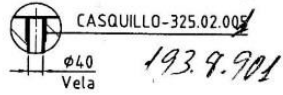
DETALLE W 1:10 600.0.165-Tor. Allen M8x30-DIN 912



DETALLE T 1:10



DETALLE R 1:10



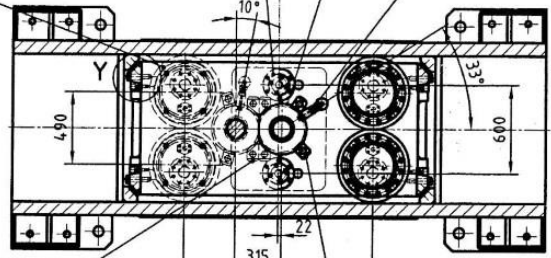
4 CILINDRO COJIN S.E.-901.55.031  
φ320x400 250 TN.

2 CILINDRO COJIN D.E.-900.86.051  
φ100xφ60x400 25 TN.

ALARGADERA 1"-399.17.005

SECCION C-C

CILINDRO COJIN INFERIOR

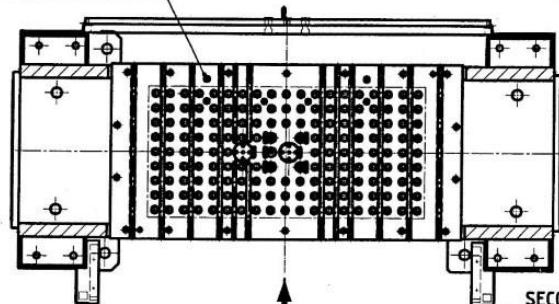


GRAPA FIJACION-155.36.199  
600.4.002 - Tor. exag. DIN-931 M27x120  
608.0.613 - Arandela Grower DIN-127 Ø27

GRAPA FIJACION-155.36.200  
600.4.002 - Tor. exag. DIN-931 M27x120  
608.0.613 - Arandela Grower DIN-127 Ø27

FRENTE

CENTRADOR-155.36.268



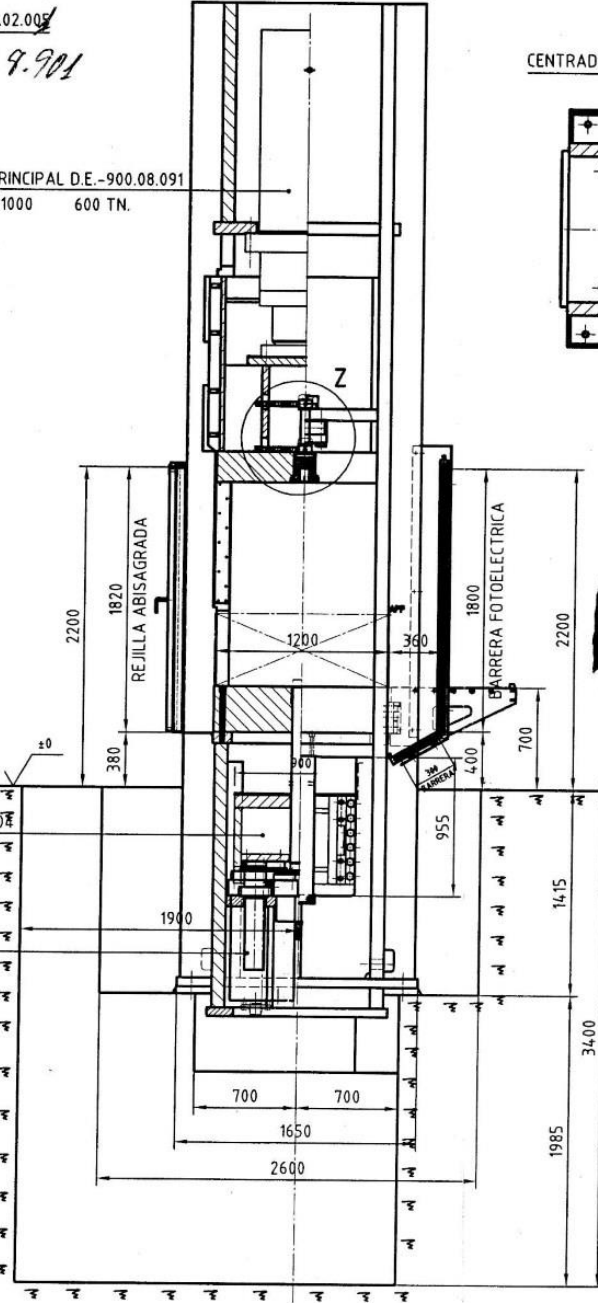
SECCION D-D

FRENTE

FRENTE



2 CILINDRO PRINCIPAL D.E.-900.08.091  
φ500xφ470x1000 600 TN.



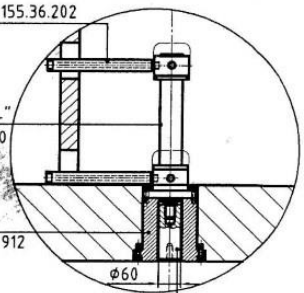
Allen M27x320-DIN 912  
Pasador cilindrico φ32x80-DIN 7979

MESA COJIN-155.36.105  
φ20-DIN 912

2 CILINDRO COJIN D.E.-900.86.051  
φ100xφ60x400 25 TN.

DETALLE Z 1:10

ALARGADOR-155.36.202



EXPULSOR-155.36.198

260.4.001-CIL.EXPULSOR "GLUAL"  
KR-50/36x200-A301-G-2-F-1-10

BRIDA CILINDRO-155.36.201  
600.0.180-Tor. Allen M10x35-DIN 912

TRAVERSA MOVIL 1:10

S.S.P. -15536-

CALA PELABLE - 950.64.009

REGLA DESLIZADERA - 950.18.005  
600.0.301 - Tor. Allen C/R DIN-7984 M8x16  
643.0.324 - Pasador elast. DIN-1481 Ø8x20

REGLA DESLIZADERA FIJA - 155.36.950  
600.4.002 - Tor. ALLEN C/R DIN-7984 M6x12

TRAVERSA - 950.60.008  
- Tor. exag. DIN-931 M4.8x280  
- Arandela plana DIN-125 Ø4.8

Edición		MODIFICACIONES		Fecha	Firma
Nº Piezas	Dibujado	Fecha	Firma		
	Revisado				
	Aprobado				

**LOIRE-SATE**

HERNANI (Gulpúzcoa)

CONJUNTO GENERAL

155-36-001-0

Prensa EDIMR 1200/1000

Sustituye al:  
Sustituido por: